



BIRTHDAY PARTIES

PLAY

EAT

SLIDE

REPEAT!

Create A Bear
In The
TedShed

Climbing
Wall

Bear
Building

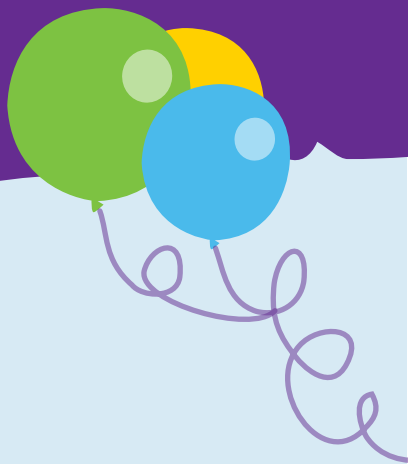
Lemur
Fun Time

Phaser
Tag

2025 Booklet

www.lemurlandings.co.uk

Contents



About.....	01
Fun Time Parties.....	02
Bear Building Parties Parties.....	03
Phaser & Climbing Combo Parties.....	04
Private Hires.....	05
Party Extras.....	06
Food Options.....	07
How To Book.....	08



About

Lemur Landings is a great venue to hold your birthday party, **no stress, no mess, maximum fun!**

We have 4 different types of parties available here at Lemur Landings, standard Fun Time parties, Phaser/Climbing Combo parties, Bear Building parties and Private Hires. All different durations and hosted at different times, find out more about each party package in this booklet.



Fun Time

Book a Lemur FunTime party at Lemur Landings and be guaranteed an exciting birthday party with a difference. **An amazing experience for guests aged 2-11.** Your little lemurs can leap, bound and play in our gigantic multi-level play frame and canon blaster arena and brilliant under 7 facilities including our role play street before enjoying a hot or cold food selection in one of our bright and colourful party rooms. See the delight on their faces as Lewey or Lola, our resident lemurs, make a special appearance at your party.

Set times apply depending on whether Term Time or Weekends and Dorset School Holidays

Term Time parties can be held at 11:00 or 15:45

Dorset School Holidays and Weekends 09:45, 12:45 and 15:45 (designated peak times are shown when booking)

During the day these parties start 15 minutes into the session, they allow approximately 90 minutes for play (inclusive of bear building, if added) and around 45 minutes for food. Bear building normally happens in our dedicated 'Ted Shed'. Please note this isn't always possible due to the availability of the Ted Shed or due to large party size, we therefore we reserve the right for the bear building to happen in the party room.



Lemur Fun Time Parties

Cold Menu : £19pp

Hot Menu : £20pp

**Minimum of 10 paying guests
Available 7 days a week**

Cold Food as standard	Hot Food upgrade - £1.00 per head
Mixed Sandwiches (usually jam, cheese and ham) Mixed Veggie Sticks Platter of cocktail sausages Assortment of crisps	Choice of 2 from Chicken Nuggets Sausages Pizza slices Fish Fingers served with fries and baked beans
Ice cream with sauce	Ice cream with sauce

Please bring your own cake. We can cut and portion this out for your guests.

It is also possible to order adult platters and drinks vouchers for your guests, please see page 6.

Lemur Fun Time Parties Include:

- Party Invitations
- Dedicated Party Room for all your Guests
- Two Party Parent/carer free admissions
- 2 complimentary drinks for the two Party Parent/Carers
- One free accompanying Adult 18+ per party child guest

- A dedicated party host for the duration of the party
- Unlimited Squash
- Time to play in our extensive play facilities
- Balloon Moodelling
- Cold Food* with unlimited squash for the children
- * Upgrade to hot food options available at an additional charge
- A Character Visit from Lewey or Lola Lemur

Bear Building

Create your own special hug with a create-a-bear birthday party at The Ted Shed. With no sewing required. **Our soft toy making bear and animal making kits are perfect for all kids aged 4-11.** Name your creations and make a wish. There is no need for party bags (though party bags are available as extras) as every child gets to go home hand in paw with a new best friend they have made. The Ted Shed is specially themed with lights and decorations for children to select their favourite creature to stuff with fluff.

Bear Building Birthday parties are offered as an *after hours party or can be as an upgrade to a Lemur Fun Time birthday parties for an extra £12.00 per child. Find out more on the Fun Time Birthday Parties page.

*After Hours Party duration is 2 hours (18:30 - 20:30) note that bear building forms part of the playtime part of the party which is approximately 75 mins, with the remainder of the time allowed for food.



Create A Bear Parties

Cold Menu : £29pp

Hot Menu : £30pp

**Minimum of 14 paying guests
Available 7 days a week**

Cold Food as standard	Hot Food upgrade - £1.00 per head
Mixed Sandwiches (usually jam, cheese and ham) Mixed Veggie Sticks Platter of cocktail sausages Assortment of crisps	Choice of 2 from Chicken Nuggets Sausages Pizza slices Fish Fingers served with fries and baked beans
Ice cream with sauce	Ice cream with sauce

Please bring your own cake. We can cut and portion this out for your guests. It is also possible to order adult platters and drinks vouchers for your guests, please see page 6.

Bear Building Parties Include:

- Party Invitations
- Dedicated Party Area
- Two Party Parent/carer free admissions
- 2 complimentary drinks for the two Party Parent/Carers
- One free accompanying Adult 18+ per party child guest
- A dedicated party host for the duration of the party
- Unlimited Squash
- Time to play in our extensive play facilities (exclusive)
- Balloon Moodelling
- Cold Food* with unlimited squash for the children
- * Upgrade to hot food options available at an additional charge
- A Character Visit from Lewey or Lola Lemur

Phaser & Climb

Book one of our climbing and phaser combo parties for a celebration that's out of this world! With a range of both group and individual games and no complicated vests needed, just pick up the phaser and zap!! Let the games begin. You'll also get to use Lemur Landings climbing zone, where your little lemurs can leap, bound and climb to the treetops across our climbing and Digiwall.

Food is usually taken first on this one due to timings, we know those space rangers get hungry keeping the galaxy safe.

Then the all important safety briefing and team selection. It's all action here on in, as two teams take over the playframe and sports pitch for 6 exciting games of phaser tag. There will also be time dedicated to climb and round up the scores. Whether you bring a party full of timid first timers or a pack of fearless monkeys, we tailor our activities to ensure everybody enjoys themselves. No prior climbing experience is necessary; our rangers will look after everything.

Phaser/Climbing Birthday Parties include exclusive use of Lemur Landings (please note, age and weight limits apply to the climbing equipment). This package is perfect for children aged 6-11.)

Party duration - 2 hours - held after normal operational hours and will end at 8.30pm



Phaser/Climb Combo Parties

Cold Menu : £27pp

Hot Menu : £28pp

Minimum of 14 paying guests

Cold Food as standard	Hot Food upgrade - £1.00 per head
Mixed Sandwiches (usually jam, cheese and ham) Mixed Veggie Sticks Platter of cocktail sausages Assortment of crisps	Choice of 2 from Chicken Nuggets Sausages Pizza slices Fish Fingers served with fries and baked beans
Ice cream with sauce	Ice cream with sauce

Please bring your own cake. We can cut and portion this out for your guests.

It is also possible to order adult platters and drinks vouchers for your guests, please see page 6.

Phaser Parties Include:

- Party Invitations
- Dedicated Party Area
- Two Party Parent/carer free admissions
- 2 complimentary drinks for the two Party Parent/Carers
- One free accompanying Adult 18+ per party child guest
- A dedicated party host for the duration of the party
- Unlimited Squash
- Exclusive use of the selected climbing equipment
- Balloon Moodelling
- Cold Food with unlimited squash for the children
- * Upgrade to hot food options available at an additional charge
- A Character Visit from Lewey or Lola Lemur

Private Hire

Family event, team building, employee reward event or looking to hold an extra special birthday party? Whether it's for business or just for fun, you can arrange a private hire of Lemur Landings and have the place all to yourself. Our private event package allows you and your guests to experience the entire venue **without distractions**, ensuring a truly personalised and special occasion. From tailored experiences to unforgettable moments, we're here to make your event one to remember!

*Our venue hire is available Friday, Saturday & Sunday evenings from 6.30pm until 8.30 pm, subject to availability. Other evenings may be available by request. The package includes up to **120 adults and children**, all included in the price.

A minimum of 14 days advanced notice is essential for whole venue hire private bookings.

Private Hire's must be supervised by at least one parent or guardian per 8 children who must ensure a reasonable level of behaviour is maintained.

Extras?

Food and drink is not included but drinks and snacks are available to purchase at our cafe. A variety of catering options are available, All must be ordered advance.

These include Kids Meal Deal options, as well as Pizza, Panini and Sandwich platters for adults.

Please see page 6 for more information.

Other options may be available by special arrangement.

Please note there is no kitchen service as standard unless for pre-booked food.

Need more space? Add an additional 40 guests for just £130.

Private Hire's Include:

- Party Invitations
- Up to a total of 120 Children and Adults admitted
- Exclusive time to play in our extensive play facilities
- Exclusive use of our climbing facilities
- A Character Visit from Lewey or Lola Lemur
- Option to prebook Kids Meals prior to the evening
- Option to prebook adult & kids platters prior to the evening



Party Extras

We have a fabulous host of additional items available which you can add onto our party booking, from glitter tattoos and party bags for the kids to drinks vouchers and food for the adults! Take a look at what we have! Don't Just Spoil The Kids!

Party Bags - £3.00pp

Additional Charge Per Child (Suitable for 4-year-olds +)

Glitter Tattoos - £3.00pp

Bear Building - £12.00pp

Adult Drink Vouchers - £2.50pp

And more... See next page...

Just for Adults

- Drinks vouchers £2.50pp
- Platter with chips (serves 4-6) choose from panini or pizza £35
- Sandwich platter with chips £31

Party Bags

- Standard bags £3pp

Glitter Tattoos £3pp

Kids veg platter (for 10) £9

Crisp platter £7

Fruit Platter £7

The collage features various images: a child getting a glitter tattoo, a platter of vegetables, a platter of crisps, a platter of fruit, a platter of sandwiches and chips, a platter of pizza and panini, a platter of drinks, and a platter of party bags.

Party Extras



PANINI

Panini Platter & Chips - £35.00

Serves 4 to 6 Adults, Choice of 5 panini's
(Tuna & Cheese, Ham & Cheese, Chicken Mayo, BBQ Melt & Bacon & Brie) + 3 large bowls of chips

PIZZA

Pizza Platter & Chips - £35.00

Serves 4 to 6 Adults, Choice of 3, 11" pizza's
(Pepperoni, Margherita) + 3 large bowls of chips

SANDWICHES

Sandwich Platter & Chips - £31.00

Serves 4 to 6 Adults, Choice of 5 sandwiches (Cut into 4)
(Chicken Mayo, Ham & Coleslaw, Tuna Mayo, Cheese & Coleslaw) + 3 large bowls of chips

ADDITIONAL PLATTERS

Kids Vegetable platter- £9.00pp

Platter for 10 Children

Children's Crisp Platter (Mixed) - £8.00pp

Platter for 10 Children

Seasonal Fruit Platter - £33.00

Platter for 10 Children

Food Options



Food Options for Your Party

We're here to make sure everyone enjoys delicious food at your celebration! Choose from our tasty selection of cold foods, included as standard, or upgrade to add a variety of hot food options for just £1.00 per head.



Cold Food

Included as Standard

Mixed Sandwiches – A classic selection of freshly made sandwiches, usually including jam, cheese, and ham

Cocktail Sausages

Assortment of Crisps – A mix of popular crisp, usually bacon rashers, onion rings & cheese balls.

Fresh Veggie Sticks – Usually Cucumber & Carrot Sticks



Ice Cream with Sauce – two scoops of vanilla icecream served with a choice of sweet sauces.

Hot Food Upgrade

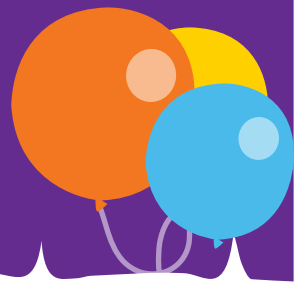
£1.00 per head

Choose two options from the following delicious choices, all served with chips and baked beans:

Chicken Nuggets, Sausages, Pizza Slices (Classic cheese and tomato pizza) or **Fish Fingers**

Ice Cream with Sauce – two scoops of vanilla icecream served with a choice of sweet sauces.

How to book



- 1. Choose Your Party Type:** Select the type of party you'd like to host. Available dates and times will be displayed. If a time isn't shown, it means it's not available for that day. Party times vary based on the day of the week and whether it's a school holiday. See the schedule below for details.
- 2. Select Your Preferred Time and Date:** Choose your ideal combination of date and time. Make sure to enter the number of children attending — all party attendees must be included in this number.
- 3. Add Optional Extras:** Customize your party experience by selecting from our optional extras. These will be added to your total party cost per child.
- 4. Complete Your Booking:** Once you're happy with your selections, add your party to the basket and proceed to payment using our secure online booking system.
- 5. Receive Confirmation:** After booking, you will receive an order confirmation via email. Please note that your party is not officially confirmed until our Groups and Party Coordinator contacts you with further details. This email will also include downloadable party invitations.

We strive to get in touch quickly, but it may take up to 48 hours. If you haven't heard from us within this time, please reach out at groupsandparties@lemurattractions.co.uk.



Peak Visiting Hours

Dorset School
Holidays

How to book



Party Options in any one week are:

Party Type	Price per child	Min no. of children	Availability	Timings
Lemur Fun Time off peak	£17.00	14	Term Time	Monday - Friday 11am & 3:45pm
Lemur Fun Time peak	£19.00	14	Weekends & School Holidays	9:15, 12:30 & 3:45
Lemur Fun time After Hours	£20.00	20	Friday, Saturday & Sunday Evenings	6.30pm
Bear Building After Hours	£29.00	14	Friday, Saturday & Sunday Evenings	6.30pm
Phaser & Climbing Combo	£27.00	14	Friday, Saturday & Sunday Evenings	6.30pm
Exclusive Private Hire (2hrs)	Up to 120 children & adults, £495?, extra up to 40 guests (+£130)		Friday, Saturday & Sunday Evenings	6.30pm

